

# Real Estate Market Overview 2005

## Brownsville - Harlingen

Brownsville was named after Fort Brown in honor of Major Jacob Brown, who was killed directing his defenses against Mexican forces during the Mexican-American War. The Brownsville-Harlingen Metropolitan Statistical Area (MSA) is at the southernmost tip of Texas. The MSA is bordered by Mexico to the south, the McAllen MSA to the west and the Gulf of Mexico to the east. Corpus Christi lies about 150 miles to the north. According to the U.S. Census Bureau, the MSA was the 28th fastest growing area in the country and fifth fastest growing area in the state between 1990 and 2000.

Quick Facts	
Land Area	954 square miles
Population Density (2000)	351 people per square mile
Counties	Cameron
Area Cities and Towns	
Brownsville, Combes, Harlingen, La Feria, La Paloma, Rancho Viejo, Rio Hondo, San Benito, Santa Maria, Santa Rosa, South Padre Island, Port Isabel	



**Table of Contents**

Demographics ..... 3

Education ..... 6

Employment ..... 7

Economy ..... 12

Infrastructure ..... 13

Public Facilities ..... 15

Multifamily ..... 16

Housing ..... 17

Retail ..... 21

Hotel ..... 22

Office ..... 23

Industrial ..... 24

## Brownsville-Harlingen Market Overview 2005 Demographics

---

**Brownsville MSA Population**

Year	Population	Percent Change
1990	260,120	1.4
1991	269,261	3.5
1992	277,322	3.0
1993	288,297	4.0
1994	297,316	3.1
1995	304,928	2.6
1996	312,086	2.3
1997	318,281	2.0
1998	324,556	2.0
1999	330,277	1.8
2000	335,227	1.5
2001	344,262	2.7
2002	353,086	2.6
2003	362,372	2.6
2004	371,825	2.6

Source: U.S. Census Bureau

**Area Cities With 10,000 or More Residents**

City	2000 Population	Growth 1990 - 2000 (in percent)
Brownsville	139,722	21.4
Harlingen	57,564	20.4
San Benito	23,444	12.2

Source: U.S. Census Bureau

**Texas Metropolitan Area Population Change, 1990 - 2004**

<b>Metropolitan Area</b>	<b>1990 Population</b>	<b>2004 Population</b>	<b>Percent Change</b>
McAllen-Edinburg-Mission	383,545	658,248	71.6
Austin-San Marcos	846,227	1,412,271	66.9
Laredo	133,239	219,464	64.7
Dallas	2,676,248	3,886,553	45.2
<b>Brownsville-Harlingen-San Benito</b>	<b>260,120</b>	<b>371,825</b>	<b>42.9</b>
Brazoria County	191,707	271,130	41.4
Houston	3,321,911	4,587,092	38.1
Fort Worth-Arlington	1,361,034	1,878,334	38.0
<b>Texas</b>	<b>16,986,335</b>	<b>22,490,022</b>	<b>32.4</b>
San Antonio	1,324,749	1,722,117	30.0
Bryan-College Station	121,862	156,275	28.2
Killeen-Temple	255,299	325,398	27.5
Galveston-Texas City	217,396	271,743	25.0
Tyler	151,309	186,414	23.2
Sherman-Denison	95,019	115,933	22.0
Amarillo	187,514	227,472	21.3
El Paso	591,610	713,126	20.5
Waco	189,123	222,439	17.6
Victoria	74,361	85,777	15.4
Lubbock	222,636	251,018	12.7
Longview-Marshall	193,801	215,159	11.0
Texarkana	120,132	132,716	10.5
Corpus Christi	349,894	385,700	10.2
Odessa-Midland	225,545	244,832	8.6
Beaumont-Port Arthur	361,218	383,443	6.2
San Angelo	98,458	103,772	5.4
Wichita Falls	130,351	136,595	4.8
Abilene	119,655	125,108	4.6

Source: U.S. Census Bureau

**Brownsville MSA Projected Population**

<b>Year</b>	<b>Texas State Data Center (Scenario 0.5)</b>	<b>Texas Water Development Board</b>
2005	374,604	-
2010	415,136	405,463
2015	457,044	-
2020	499,618	476,992

Sources: Texas State Data Center and Texas Water Development Board

**Household Composition**

	Brownsville MSA	Texas
Average household size (2000)	3.4	2.74
Population younger than 18 (2000, in percent)	33.8	28.20
Population 65 and older (2000, in percent)	11.1	9.90

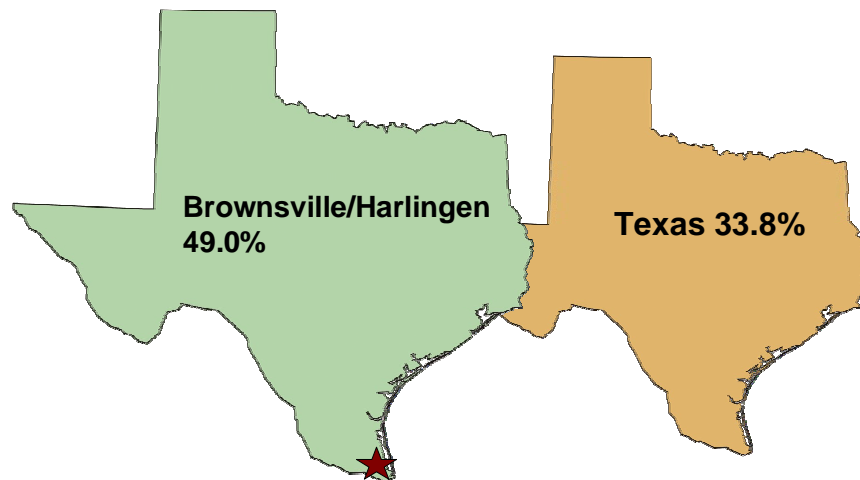
Source: U.S. Census Bureau

**Distribution by Race and Hispanic or Latino Origin, 2000 (in percent)**

	Brownsville MSA	Texas
White	80.3	71.0
Black	0.5	11.5
Asian	0.5	2.7
American Indian	0.4	0.6
Other	16.0	11.7
Two or more races	2.3	2.5
Hispanic (of any race)	84.3	32.0

Source: U.S. Census Bureau

**Projected Population Growth, 2000 – 2020  
 (in percent)**



Source: Texas State Data Center (Scenario 0.5)

## Brownsville-Harlingen Market Overview 2005 Education

---

**Educational Attainment, Persons Age 25 and Older  
2000 (in percent)**

Level of Education	Cameron County	Texas
High school graduate	20.1	24.8
Some college, no degree	17.5	22.4
Associate's degree	4.3	5.2
Bachelor's degree	8.4	15.6
Graduate or professional degree	4.9	7.6

Source: U.S. Census Bureau 2000

**Educational Attainment, Persons Age 25 and Older  
2000 (in percent)**

Level of Education	Brownsville - Harlingen - San Benito MSA	Texas
High School Graduate or Higher	55.2	75.7
Bachelor's Degree or Higher	13.4	23.2

Source: U.S. Census Bureau 2000

**Local College and University Enrollment**

School	Fall 2000	Fall 2001	Fall 2002	Fall 2003	Fall 2004
Texas State Technical College	3,266	3,842	4,109	4,082	4,456
The University of Texas at Brownsville and Texas Southmost College	10,402	10,704	11,335	12,057	13,247

Source: Texas Higher Education Coordinating Board

**Local College and University Enrollment**

School	Spring 2000	Spring 2001	Spring 2002	Spring 2003	Spring 2004
Texas State Technical College	2,917	3,167	3,600	3,704	3,739
The University of Texas at Brownsville and Texas Southmost College	10,590	10,489	10,856	11,569	12,595

Source: Texas Higher Education Coordinating Board

## Brownsville-Harlingen Market Overview 2005 Employment

---

### Brownsville Top Ten Employers

Employer	Sector	Employees
Brownsville Independent School District	Education	6,125
University of Texas at Brownsville	Education	1,628
Cameron County	Government	1,550
City of Brownsville	Government	1,155
Wal-Mart	Retail	885
Convergys Corp.	Call center	850
Brownsville Medical Center	Medical services	808
Valley Regional Medical Center	Health care	724
AMFELS	Manufacturing	706
Trico Technologies	Manufacturing	675

Source: Brownsville Economic Development Council July-2004 and individual employers

### Brownsville Top Ten Private Employers

Employer	Sector	Employees
Wal-Mart	Retail	885
Convergys Corp.	Call Center	850
Brownsville Medical Center	Medical services	808
Valley Regional Medical Center	Health care	724
AMFELS	Manufacturing	706
Trico Technologies	Manufacturing	675
H-E-B Food Stores	Retail	645
Public Utilities Board	Utilities	462
ORC Industries	Manufacturing	400
Rich Sea Pak	Manufacturing	300

The companies listed above are not inclusive of every company in the city but those that respond to a local survey.

Source: Brownsville Economic Development Council July-2004 and individual employers

### Harlingen Top Ten Employers

Employer	Sector	Employees
Harlingen CISD	Education	2,444
Valley Baptist Medical Center	Hospital	1,723
EchoStar	Call center	1,086
Vicki Roy Home Health	Health Services	878
City of Harlingen	City government	546
Texas State Technical College	Education	541
Department of State Health Services	Mental health	410
Harlingen Medical Center	Health Services	395
H-E-B	Grocery	359
Advanced Call Center Technologies	Call center	353

Source: Harlingen Area Chamber of Commerce Sept-2004

### Harlingen Top Ten Private Employers

Employer	Sector	Employees
Valley Baptist Medical Center	Hospital	1,723
EchoStar	Call center	1,086
Vicki Roy Home Health	Health Services	878
Harlingen Medical Center	Hospital	395
H-E-B	Grocery	359
Advanced Call Center Technologies	Call Center	353
West Corporation	Call center	350
Wal-Mart SuperCenter	Retail	327
Su Clinica Familiar	Health Services	263
Acetylene Oxygen Company	Misc. Gases	231

Source: Harlingen Area Chamber of Commerce Sept-2004

### Employment Growth by Industry

Employment Growth by Industry	Brownsville-Harlingen MSA	Texas
Employment growth 2004 (in percent)	1.4	1.3
Unemployment rate 2004 (in percent)	8.8	6.1
New jobs in 2004	1,600	120,600
<b>Employment growth by sector 2004 (in percent)</b>		
Total Nonfarm	1.4	1.3
Natural Resources, Mining, and Construction	-6.2	-
Natural Resources and Mining	-	3.2
Construction	-	-1.0
Manufacturing	-7.1	-0.2
Trade, Transportation and Utilities	1.3	1.2
Information	0	-1.1
Financial Activities	2.2	1.7
Professional and Business Services	4.2	1.7
Educational and Health Services	2.7	2.1
Leisure and Hospitality	2.3	2.1
Government	0	1.5

Source: Bureau of Labor Statistics and Real Estate Center at Texas A&M University

**Texas Metropolitan Area Employment Change, 1990-2004**

<b>Metropolitan Area</b>	<b>1990 Employment</b>	<b>2004 Employment</b>	<b>Percent Change</b>
McAllen-Edinburg-Mission	128,092	231,224	80.5
Austin-Round Rock	452,961	738,706	63.1
Laredo	48,588	77,898	60.3
Killeen-Temple-Fort Hood	93,215	137,634	47.7
<b>Brownsville-Harlingen</b>	<b>90,534</b>	<b>130,457</b>	<b>44.1</b>
College Station-Bryan	69,738	97,038	39.1
San Antonio	620,868	833,331	34.2
Dallas-Fort Worth-Arlington	2,163,142	2,790,815	29.0
<b>Texas</b>	<b>8,071,312</b>	<b>10,362,982</b>	<b>28.4</b>
Amarillo	96,512	122,770	27.2
Tyler	70,712	89,186	26.1
Houston-Baytown-Sugar Land	1,926,731	2,411,653	25.2
Sherman-Denison	43,644	53,651	22.9
Lubbock	110,510	134,203	21.4
Waco	86,033	104,444	21.4
Midland	51,435	61,405	19.4
Abilene	64,278	76,330	18.7
Corpus Christi	156,681	184,573	17.8
Victoria	44,880	52,847	17.8
El Paso	228,522	267,419	17.0
Longview	80,290	93,867	16.9
Wichita Falls	61,226	70,608	15.3
San Angelo	44,183	50,604	14.5
Texarkana	51,476	57,743	12.2
Odessa	52,585	57,944	10.2
Beaumont-Port Arthur	156,860	164,663	5.0

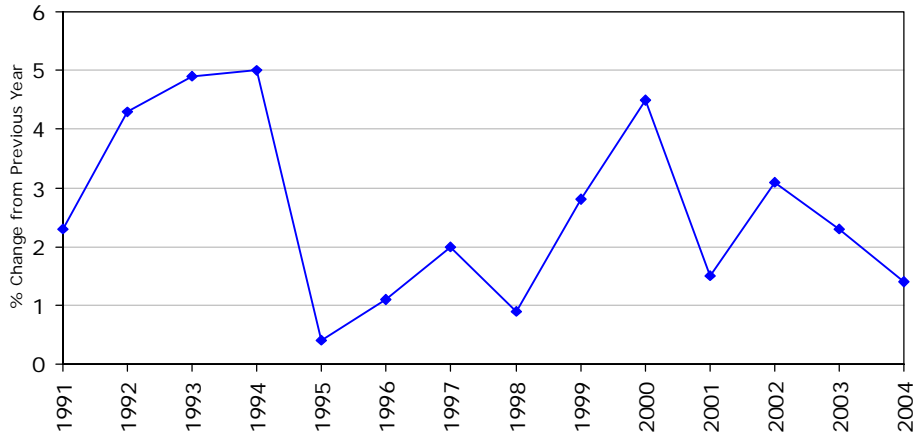
Source: Bureau of Labor Statistics and Real Estate Center at Texas A&M University

**Brownsville-Harlingen MSA Employment**

<b>Year</b>	<b>Employment</b>	<b>Percent Change</b>
1990	90,866	-
1991	92,995	2.3
1992	96,985	4.3
1993	101,777	4.9
1994	106,842	5.0
1995	107,294	0.4
1996	108,490	1.1
1997	110,691	2.0
1998	111,679	0.9
1999	114,826	2.8
2000	119,936	4.5
2001	121,749	1.5
2002	125,526	3.1
2003	128,464	2.3
2004	130,260	1.4

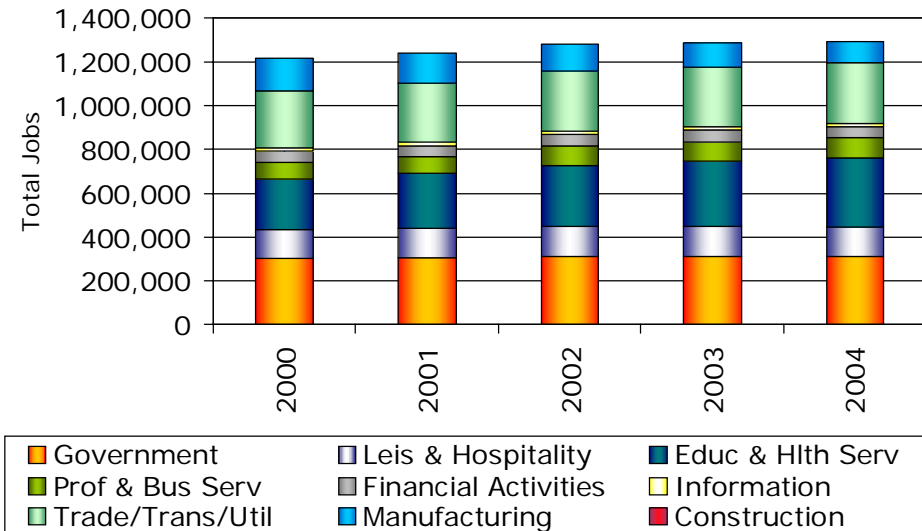
Source: U.S. Bureau of Labor Statistics

**Employment Growth  
 Brownsville-Harlingen MSA**



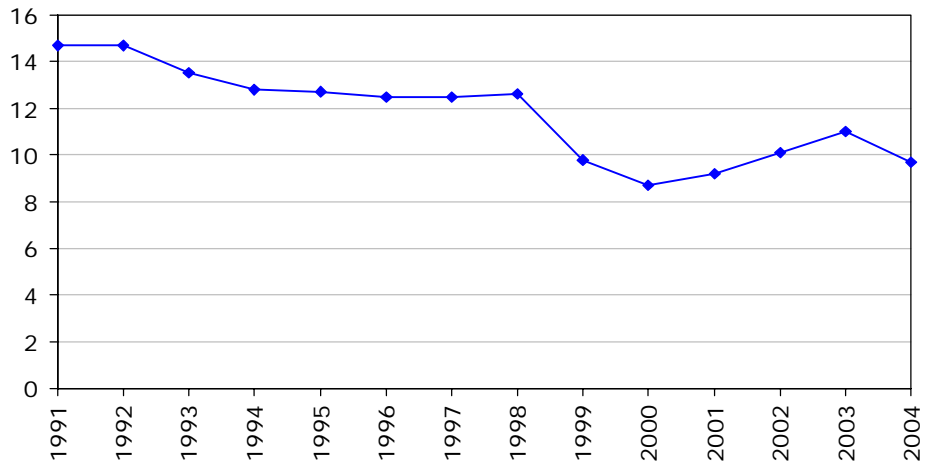
Source: U.S. Bureau of Labor Statistics and Real Estate Center at Texas A&M University

**Distribution of Employment in Major Categories**



Source: Texas Workforce Commission Feb-2005

**Brownsville-Harlingen MSA Unemployment Rate  
(in percent)**



Source: U.S. Bureau of Labor Statistics and Real Estate Center at Texas A&M University

## Brownsville-Harlingen Market Overview 2005 Economy

---

**Brownsville-Harlingen Gross Retail Sales**

<b>Year</b>	<b>Total Sales</b>	<b>Sales per Capita</b>
1990	\$1,559,442,035	\$5,995
1991	1,675,994,989	6,224
1992	1,797,075,641	6,480
1993	1,945,742,753	6,749
1994	2,078,801,994	6,992
1995	1,928,108,028	6,323
1996	2,019,237,643	6,470
1997	2,134,575,151	6,707
1998	2,265,221,671	6,979
1999	2,439,207,037	7,385
2000	2,674,843,960	7,979
2001	2,890,644,663	8,397
2002	2,975,604,755	8,427
2003	3,048,040,189	8,411
2004	3,131,117,985	8,421
<b>State Average 2004:</b>		<b>\$14,546</b>

Source: Texas Comptroller's Office

## Brownsville-Harlingen Market Overview 2005 Infrastructure

**Rio Grande Valley Airline Activity (Domestic enplaned only)**

Airport	1998	1999	2000	2001	2002	2003	2004
Brownsville-South Padre Island International (BRO)	74,066	71,729	67,869	71,398	70,074	61,973	67,821
McAllen International (MFE)	312,685	327,688	328,061	298,298	278,697	284,567	317,806
Valley International Airport (Harlingen - HRL)	466,728	469,214	468,358	438,559	391,325	401,567	444,025
Total Rio Grande Valley domestic boardings	853,479	868,631	864,288	808,255	740,096	748,107	829,652

Source: BRO, HRL and MFE Airport Management (Assembled and Distributed by HRL Management Jan-2005)

**Air Cargo Statistics (in pounds)**

Airport	2001	2002	2003	2004
Brownsville-South Padre Island International (BRO)	51,877,568	48,841,290	38,420,130	8,505,154*

\*Numbers reflect Mid-May departure of two cargo carriers

Source: Brownsville-South Padre Island International Dec-2004

**Port Activity**

Port of Brownsville	1999	2000	2001	2002	2003	2004
Total calls *	925	944	973	873	921	1,027
Total metric tonnage (in millions)	2.91	3.19	3.68	4.21	3.65	3.76

\*includes barges and cargo vessels

Port of Harlingen**	FY 98-99	FY 99-00	FY 00-01	FY 01-02	FY 02-03	FY 03-04
Total tonnage	1,025,624	916,228	1,065,945	1,137,759	1,031,465	995,251

\*\*Based on fiscal year

Source: Brownsville and Harlingen Port Authority

**Brownsville Border Crossings**

	2001	2002	2003	2004
<b>Rail Crossings</b>				
Northbound	11,415	7,832	10,055	6,266
Southbound	40,935	50,309	41,059	34,917
<b>Total</b>	<b>52,350</b>	<b>58,141</b>	<b>51,114</b>	<b>41,183</b>
<b>Vehicle Crossings</b>				
Northbound	6,991,739	7,463,926	6,872,032	6,753,606
Southbound	7,215,436	7,529,858	6,873,466	6,727,312
<b>Total</b>	<b>14,207,175</b>	<b>14,993,784</b>	<b>13,745,498</b>	<b>13,480,918</b>
<b>Truck Crossings *</b>				
Northbound	251,613	200,444	189,319	186,947
Southbound	217,731	215,573	199,498	201,447
<b>Total</b>	<b>469,344</b>	<b>416,017</b>	<b>388,817</b>	<b>388,394</b>
<b>Pedestrian Crossings</b>				
Northbound	3,198,168	3,044,681	2,765,884	2,715,080
Southbound	2,792,043	2,697,340	2,438,581	2,392,260
<b>Total</b>	<b>5,990,211</b>	<b>5,742,021</b>	<b>5,204,465</b>	<b>5,107,340</b>

\* Includes only 2 to 6 axle loaded and unloaded commercial vehicles.

Source: Texas Center for Border Economic and Enterprise Development Jan-2005

**Harlingen Border Crossings\***

	2001	2002	2003	2004
<b>Vehicle Crossings</b>				
Northbound	753,820	863,459	790,184	787,040
Southbound	583,315	681,837	652,097	665,667
<b>Total</b>	<b>1,337,135</b>	<b>1,545,296</b>	<b>1,442,281</b>	<b>1,452,707</b>
<b>Truck Crossings **</b>				
Northbound	52,092	49,425	40,070	39,342
Southbound	42,598	39,296	37,235	37,026
<b>Total</b>	<b>94,690</b>	<b>88,721</b>	<b>77,305</b>	<b>76,368</b>
<b>Pedestrian Crossings</b>				
Northbound	-	-	-	-
Southbound	950	805	830	1,006
<b>Total</b>	<b>950</b>	<b>805</b>	<b>830</b>	<b>1,006</b>

\* Through Los Indios / Free Trade International Bridge

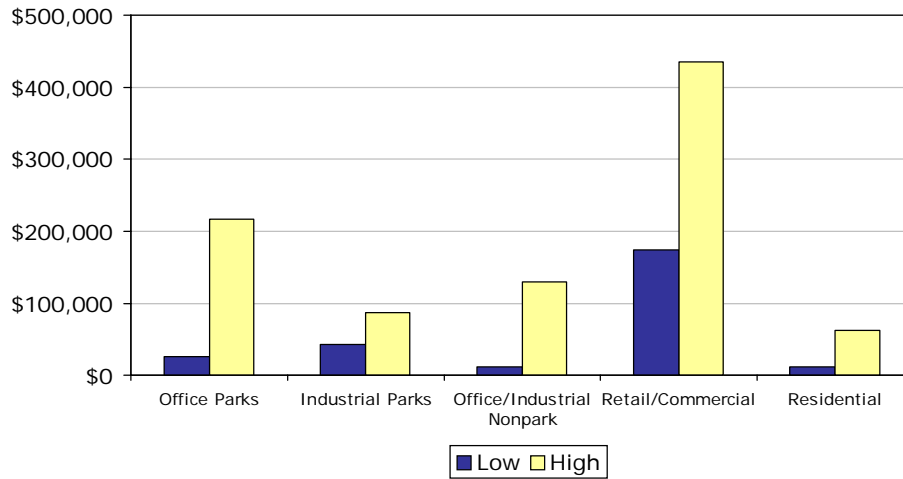
\*\* Includes only 2 to 6 axle loaded and unloaded commercial vehicles.

Source: Texas Center for Border Economic and Enterprise Development

## Brownsville-Harlingen Market Overview 2005 Public Facilities

---

Brownsville/Harlingen/San Benito, Development Land  
(Price/Acre)



Source: NAI Rio Grande Valley

## Brownsville-Harlingen Market Overview 2005 Multifamily

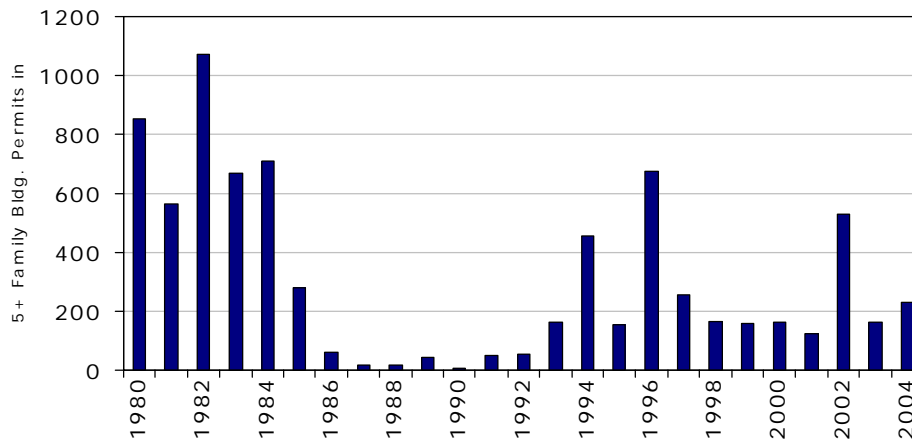
---

**Rio Grande Valley Apartment Statistics 2004**

	Rio Grande Valley	Texas Metro Average
Average rent per square foot	\$0.61	\$0.79
Average rent for units built since 2000	\$0.64	\$0.92
Average occupancy (in percent)	94.7	91.5
Average occupancy for units built since 2000 (in percent)	95.6	92.4

Source: Apartment MarketData Research Jan-2005

**Brownsville-Harlingen MSA Multifamily Building Permits**



Source: U.S. Census Bureau and Real Estate Center at Texas A&M University

## Brownsville-Harlingen Market Overview 2005 Housing

---

### Housing Affordability - Fourth Quarter 2004

	Percent of Households That Can Afford Median-priced Home	THAI*	THAI for First-time Homebuyers
Brownsville	53	1.05	0.85
Harlingen	52	1.02	0.95
Texas MLS Total	50	0.99	0.91
U.S. Total	49	0.99	0.72

\* The THAI is the ratio of median household income to the income required to buy the median-priced home using currently available mortgage financing. Standard financing is a 30-year loan covering 80 percent of the cost of the home. A THAI of 1.00 indicates that the median household income is just enough to qualify for a loan sufficient to purchase the median-priced home.

Source: Real Estate Center at Texas A&M University

### Price Distribution of MLS Homes Sold, Harlingen Area, 2004 (in percent)

Price Range	1998	1999	2000	2001	2002	2003	2004
\$29,999 or less	7.8	10.1	5.2	10.8	-	-	7.0
30,000 - 39,999	6.3	6.2	7.5	5.7	-	-	4.3
40,000 - 49,999	7.8	6.5	6.8	9.8	-	-	6.9
50,000 - 59,999	12.9	8.5	9.1	8.1	-	-	8.8
60,000 - 69,999	9.2	9.8	12.3	10.5	-	-	11.1
70,000 - 79,999	10.6	14.4	8.1	9.8	-	-	8.2
80,000 - 89,999	11.2	8.2	8.8	9.5	-	-	7.9
90,000 - 99,999	6.6	5.2	7.8	5.7	-	-	5.7
100,000 - 119,999	9.8	8.2	8.4	8.4	-	-	10.8
120,000 - 139,999	5.7	5.9	6.5	5.4	-	-	8.8
140,000 - 159,999	4.6	6.5	3.9	7.1	-	-	6.5
160,000 - 179,999	1.7	5.2	4.5	4.1	-	-	3.1
180,000 - 199,999	2.3	1.3	2.6	0.3	-	-	2.3
200,000 - 249,999	2.0	2.3	3.2	2.7	-	-	3.6
250,000 - 299,999	0.9	0.7	1.9	0.3	-	-	2.2
300,000 - 399,999	0.6	0.3	1.9	0.0	-	-	2.0
400,000 - 499,999	0.0	0.0	0.6	0.0	-	-	0.5
500,000 and more	0.0	0.0	0.6	1.0	-	-	0.4

"-" represents unreported data or nonparticipation in Real Estate Center's survey.

Source: Real Estate Center at Texas A&M University

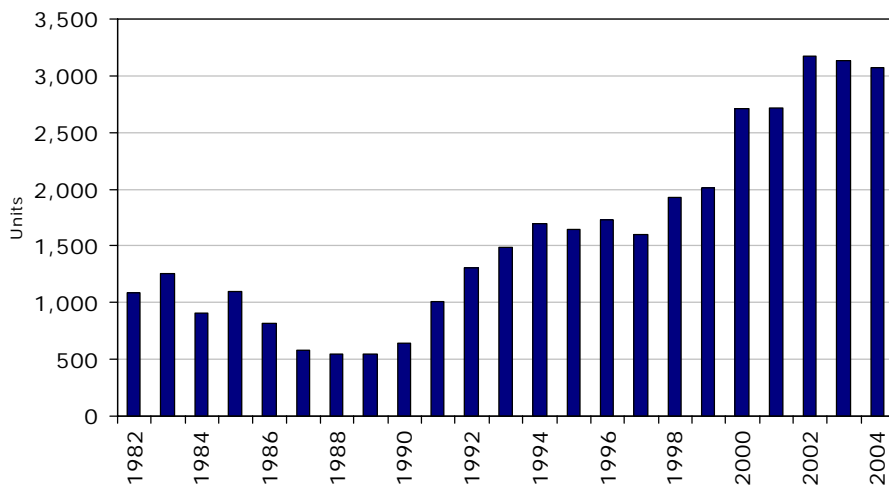
**Property Tax Rates, 2004**  
**County, Major City, Major School District**

Tax Rate per \$100	
Taxing Entity*	Valuation
City of Brownsville	0.68
School District	1.49
Cameron County	0.36
<b>Total</b>	<b>\$2.52</b>
Tax Rate per \$100	
Taxing Entity*	Valuation
City of Harlingen	0.59
School District	1.55
Cameron County	0.36
<b>Total</b>	<b>\$2.50</b>
Tax rate per \$100	
Taxing Entity*	Valuation
City of San Benito	0.68
School District	1.57
Cameron County	0.36
<b>Total</b>	<b>\$2.61</b>

\* Only the typical taxing entities are listed. However, there are numerous numbers of taxing entities that need to be taken into account for an actual tax rate calculation.

**Source: Cameron County Appraisal District**

**Brownsville-Harlingen MSA Single-Family Building Permits**



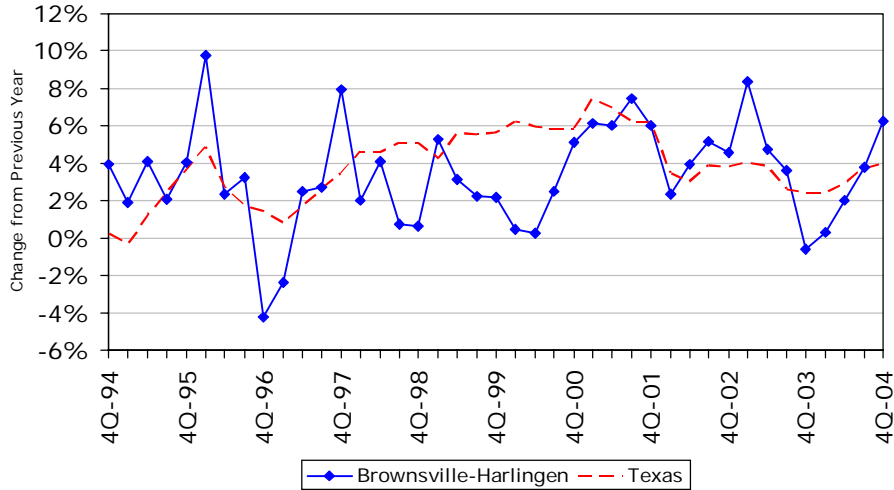
**Source: U.S. Census Bureau and Real Estate Center at Texas A&M University**

Real Estate Center Market Overview 2005  
Brownsville – Harlingen, TX

**Home Price Appreciation  
Brownsville-Harlingen MSA\***

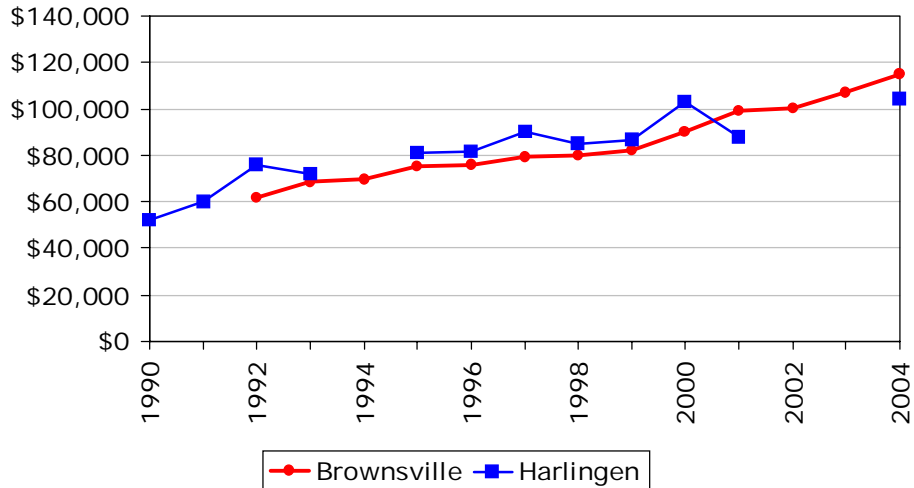
The HPI for each geographic area is estimated using repeated observations of housing values for individual single-family residential properties on which at least two mortgages were originated and subsequently purchased by either Freddie Mac or Fannie Mae since January 1975.

\*According to the new 2003 MSA definitions, including Cameron County



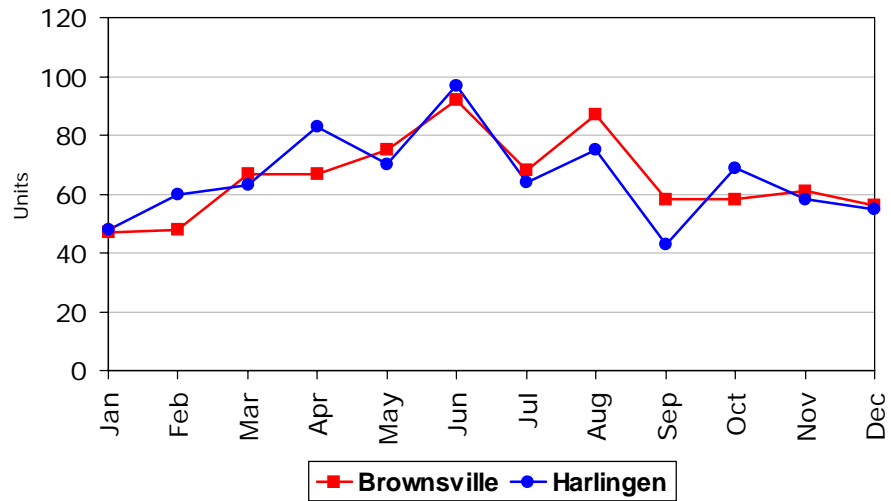
Source: Office of Federal Housing Enterprise Oversight

**Average Sales Price of Single-Family Home  
Brownsville-Harlingen Area**



Source: Real Estate Center at Texas A&M University

Single-Family Home Sales Volume  
Brownsville - Harlingen  
2004



Source: Real Estate Center at Texas A&M University

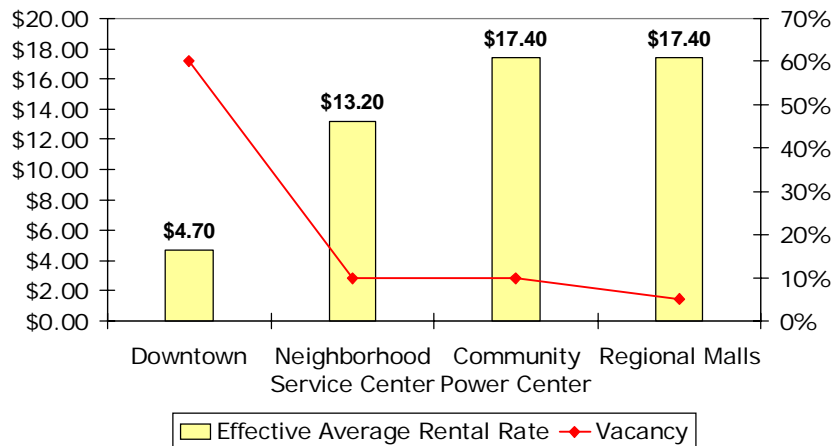
## Brownsville-Harlingen Market Overview 2005 Retail

**Summary of Retail Market Indicators (Harlingen/Brownsville/San Benito) - Year-End 2004  
 (Rent/Square foot/Year)**

Retail	Low	High	Effective Avg.	Vacancy
Downtown	\$4.00	\$5.40	\$4.70	60%
Neighborhood Service Center	10.20	16.40	13.20	10%
Community Power Center	7.00	18.00	17.40	10%
Regional Malls	15.40	21.00	17.40	5%

Source: NAI Rio Grande Valley

**Brownsville/Harlingen/San Benito,  
 Retail Market, Year-End 2004**



Source: NAI Rio Grande Valley

## Brownsville-Harlingen Market Overview 2005 Hotel

---

**Hotel\* Occupancy and Rental Rates**

	2003**		2004	
	Brownsville Harlingen	Texas	Brownsville Harlingen	Texas
# Rooms 000's	6.9	320.2	7.3	329.2
Average daily rate	\$79.57	\$68.80	\$81.03	\$70.62
Occupancy rate (in percent)	49.5	54.2	49.2	55.2

\*Only properties exceeding \$18,000 in the current quarter are included; those units below \$18,000 only result in 1.5% of the total state revenues, and have been excluded from this database.

\*\*2003 and later reflects new MSA definition including Cameron County

**Source: Office of the Governor Economic Development and Tourism and  
 Source Strategies, Inc. of San Antonio**

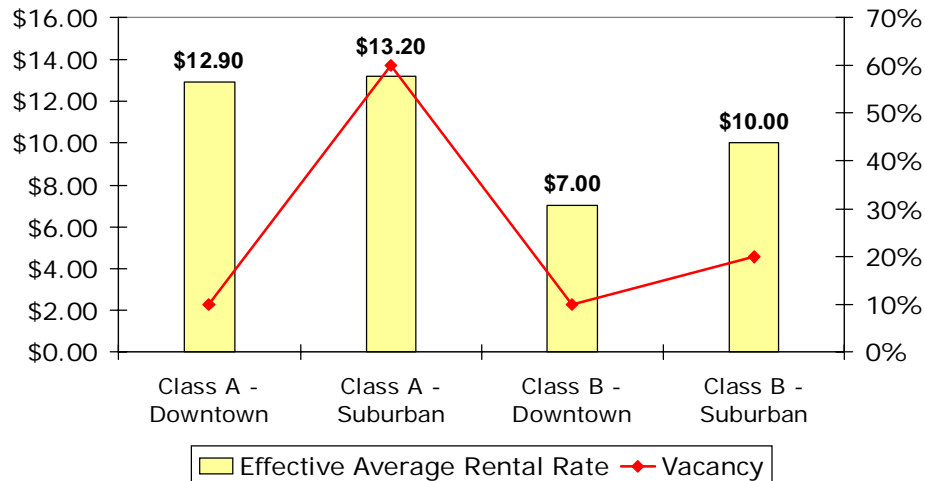
## Brownsville-Harlingen Market Overview 2005 Office

**Summary of Office Market Indicators (Harlingen/Brownsville/San Benito) - Year-End 2004  
(Rent/Square foot/Year)**

Office Market	Low	High	Effective Avg.	Vacancy
<b>Downtown Office</b>				
New Construction	N/A	N/A	N/A	N/A
Class A	\$12.00	\$13.80	\$12.90	10%
Class B	\$3.60	\$10.20	\$7.00	60%
<b>Suburban Office</b>				
New Construction	\$12.00	\$20.00	\$15.00	5%
Class A	\$12.00	\$18.00	\$13.20	10%
Class B	\$9.60	\$12.00	\$10.00	20%

Source: NAI Rio Grande Valley

**Brownsville/Harlingen  
Office Market, Year-End 2004**



Source: NAI Rio Grande Valley

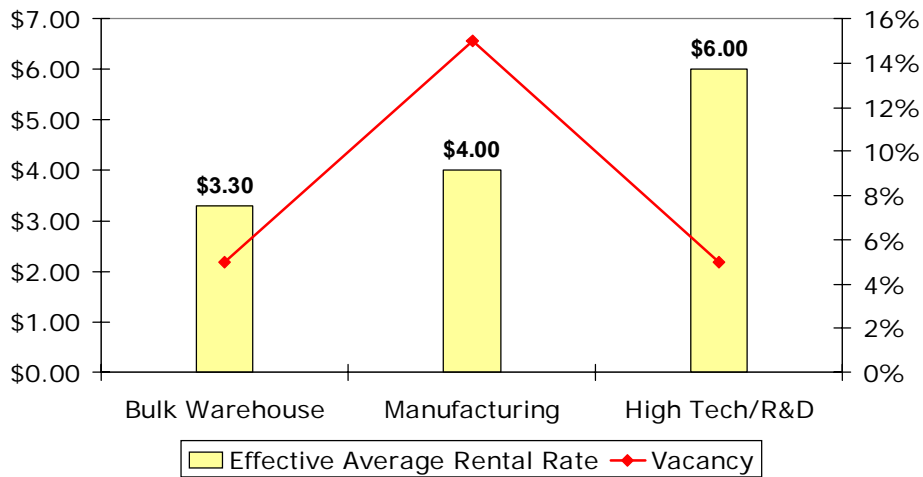
## Brownsville-Harlingen Market Overview 2005 Industrial

**Summary of Industrial Market Indicators (Harlingen/Brownsville/San Benito) - Year-End 2004**  
 (Rent/Square foot/ Year)

Industrial	Low	High	Effective Avg.	Vacancy
Bulk Warehouse	\$3.00	\$3.60	\$3.30	5%
Manufacturing	3.60	6.00	4.00	15%
High Tech / R&D	4.80	12.00	6.00	5%

Source: NAI Rio Grande Valley

**Brownsville/Harlingen/San Benito,  
 Industrial Market, Year-End 2004**



Source: NAI Rio Grande Valley



This annual report is created free of charge by the Real Estate Center at Texas A&M University. We strive to provide the most accurate, up-to-date, and insightful data to paint a detailed picture of Texas' Metropolitan Statistical Area's. The Center also provides numerous publications, resources, and data on building permits, employment, population, and home sales at <http://recenter.tamu.edu>.

Report compiled by:

Administrative Coordinator

Edith Craig

Research Analysts

Isilay Civan

Blake Lacy

Real Estate Center, 2115 TAMU, College Station, TX 77843-2115  
Phone: 979.845.2031 | Fax: 979.845.0460